

*Helping People  
Help Themselves*



SOUTH CENTRAL  
**SCHRA**  
HUMAN RESOURCE AGENCY

**SCHRA**

**HELPS PEOPLE IN NEED**

**TO HELP THEMSELVES AND**

**EACH OTHER TO ENRICH THEIR LIVES.**

**ANNUAL REPORT**

**2014 - 2015**

**For questions or comments,  
please contact the SCHRA central office  
at 1-800-221-2642 or 931-433-7182,  
or visit our website at [www.schra.us](http://www.schra.us).**

**ANNUAL REPORT  
2014 - 2015  
TABLE OF CONTENTS**

Message from the Executive Director	Page 1
<b>SCHRA PROFILE:</b>	
Profile/Map	Page 3
Vision/Mission Statement	Page 4
SCHRA Programs At-a-Glance	Page 5
Senior Staff	Page 6
Organizational Chart	Page 7
Neighborhood Service Centers	Page 8
<b>REGULATORY BODIES:</b>	
Overview	Page 9
Board Officers	Page 10
Policy Council Committees	Page 11
SCHRA Governing Board	Page 12
SCHRA Policy Council	Page 13
<b>FISCAL SERVICES:</b>	
Combined Statement of Revenues & Expenditures	Page 14
Combined Balance Sheet	Page 16
Operations Budget	Page 17
<b>PROGRAM SUMMARIES:</b>	
Nutrition Services for the Elderly - Congregate	Page 20
Nutrition Services for the Elderly – Home Delivered	Page 21
Home & Community Based Services (Meals)	Page 22
Homemaker Services	Page 24
Foster Grandparent Program	Page 26
Volunteer Income Tax Assistance Program	Page 27
Senior Community Service Employment Program	Page 28
Low Income Home Energy Assistance Program	Page 30
Community Services Block Grant Program	Page 31
SSBG/Protective Service Homemaker Program	Page 34
Weatherization Assistance Program	Page 35
Rebuild and Recover – Lincoln County	Page 36
Community Representative Payee Program	Page 37
Drug & Alcohol Safety Program	Page 38
Emergency Food Assistance Program	Page 39
Community Corrections Program	Page 40
Fingerprinting Services	Page 41
Head Start/Early Head Start	Page 42
<b>IN MEMORY</b>	Back cover

---

## FROM THE EXECUTIVE DIRECTOR...

---



The past program year was an exciting challenge for most of us at the Central Office, as well as many in the satellite offices, due to expectations of expansion projects in the Early Head Start Program and well as additional services being added to some of our existing programs.

As I stated in last year's annual report, all nine agencies across the state underwent the State Sunset Review Audit and there were some findings that affected all agencies and some that effected individual agencies. All were reconciled as required by the state and a panel consisting of: Quincy Barlow – TAHRA President, Jason Cody – TAHRA Vice President, and myself as TAHRA Secretary/Treasurer, appeared before the Senate sub-committee on Government Operations, all nine agencies were granted a 6 year extension to continue to provide programs and services to our clients. This was the highest number of years that could be granted and the nine agencies were the first to receive such extension at the time of our appearance. I also made mention in last year's report of ROMA (Results Oriented Management and Accountability) training to be provided to our employees. This was accomplished and South Central HRA now has one of our own as a state certified ROMA trainer, Scarlet Patterson our HR Manager. I am proud of her for putting forth the time and effort to achieve this level of training in this important facet of state wide training within the scope of our grantors expectations. Due to this, we have been able to host a couple of training sessions for other agencies across the state at our Central Office facilities. I want to thank each one of you as Policy Council and Executive Committee members for attending the training sessions designed for you on the purpose and functions of our boards, committees, etc. for all of our programs. I know that this is time consuming and that you are all carrying a full calendar on a daily basis but thank you for taking the time to take an active part in the training that is offered to you to become a more involved and effective member of our organization.

After the newly elected County Mayors went to work on September 1, 2014 I began scheduling meetings with each one to visit with them to give them an overview of the agency and what our programs provided for their constituents as well as sharing with them what the latest was concerning the well-being of the agency. These meetings seemed to have been very beneficial to me by getting the privilege to meet the newly elected officials. It was my hope that it would be the same for them. Also during this time we were very busy setting up elections in each county to elect Consumer Representatives to the Policy Council. Following the election the names of those elected were sent to the County Mayor of each county for approval and the Consumer Representatives were sworn in and seated at the next meeting of the Policy Council. We did have a visit from our Head Start specialist from Atlanta for a couple of days to look at the status of our overall program and to meet with some of the Policy Council members from the agency and the Head Start/EHS program as well. As I mention

during my opening paragraph, it was on December 17<sup>th</sup> that the panel appeared before the Senate sub-committee to present our responses to the Sunset Review Audits of the state agencies.

The six months of 2015 that were part of the 14-15 Program Year were six months of good news that we could live with. It was during this time that the agency experienced great audits on all programs and their activities from the grantors auditors. It was a time of good news for all connected with the Early Head Start Program as the agency was awarded a \$2.1 million expansion project to add 4 new centers to serve that age group. That expansion presented many challenges to all concerned parties. Those were met with great enthusiasm and it did not take long to identify and acquire "new" facilities in Columbia, Fayetteville, Manchester, and Mt. Pleasant. I think all of you will be proud of these facilities and the number of children that will be added to the rolls of the program. It has been a major staffing effort to find the certified personal to fill the required positions but it has been done. We also were informed that due to our re-applying for the RSVP Program grant we would be awarded that grant again due to the component to help Veterans that was included. We are grateful to have the Early Head Start expansion monies as well as the reinstatement of the RSVP grant. Thanks to all who worked on both projects and those that will continue to do so.

Thank you for your service to the agency and to your constituents in you respective counties. I feel our "team" at the agency is getting back on track to continue to be one of the most effective in the state and to continue to provide others with like programs the same degree of guidance and knowledge as we have in the past---to continue to be looked at as some as the agency with the most effective and productive programs serving clients. Again, thank you for your support and stewardship!

Sincerely,

A handwritten signature in cursive script that reads "James Coy Anderson".

James Coy Anderson

## **SOUTH CENTRAL HUMAN RESOURCE AGENCY**

### **PROFILE**

The South Central Human Resource Agency (SCHRA) was created July 11, 1973; and chartered as a public non-profit agency February 19, 1975. Its goal is to promote the development of human resources in South Central Tennessee through effective and efficient delivery of human services.

In the years that followed, the SCHRA expanded its programs and emerged as a recognized leader in helping economically disadvantaged, elderly and handicapped persons in the South Central Tennessee area.

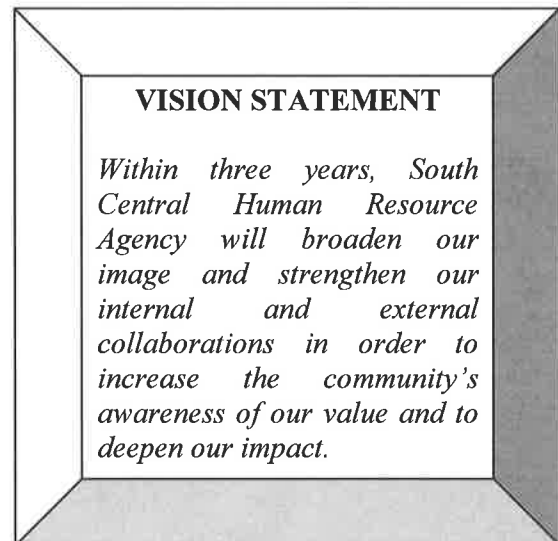
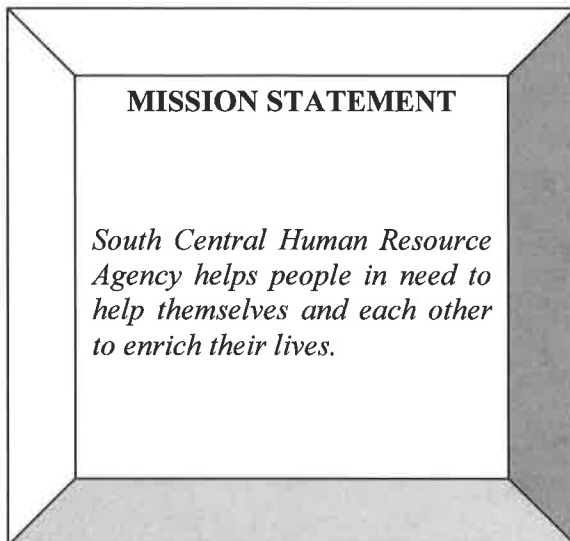
From our Central Office at 1437 Winchester Hwy. in Fayetteville, Tennessee, we strive to effectively deliver human service programs and oversee the coordination efforts through our 13 Neighborhood Service Centers located in each county. The following 13 counties served by the SCHRA contain over 6,500 square miles of vastly rural country and supports a population of approximately 423,012 individuals: Bedford, Coffee, Franklin, Giles, Hickman, Lawrence, Lewis, Lincoln, Marshall, Maury, Moore, Perry, and Wayne. Our Title V Program has expanded to four additional counties east of our area: Bledsoe, Grundy, Marion, and Sequatchie.

SCHRA has a Neighborhood Service Center (NSC) in each of our 13 counties to provide access to programs and referral to other services in the community. We have 21 Head Start Centers across our area, 3 Early Head Start Centers located in Bedford, Giles, and Lawrence counties, 3 Pre-K collaborations in Franklin, Maury, and Wayne counties. The Nutrition Program has 21 congregate meal sites and 2 main kitchens – one in Fayetteville, Lincoln County, and one in Hohenwald, Lewis County.



## **SOUTH CENTRAL HUMAN RESOURCE AGENCY MISSION AND VISION STATEMENT**

Our Strategic Planning Team met in April 2014 for an intensive three day workshop and created a new Mission and Vision Statement. Our goal is to re-visit these statements every three years to make sure they still meet our needs and goals. It is our wish that every employee and board member will be able to recite our Mission Statement.



"A mission statement is not something you write overnight.. But fundamentally, your mission statement becomes your constitution, the solid expression of your vision and values. It becomes the criterion by which you measure everything else in your life."

Quote by Stephen Covey

## SCHRA Programs At-a-Glance

Program	Goal
Home & Community Based Program (OPTIONS) Medicaid Waiver/Homemaker/Family Caregiver, Respite Sitter/Meals/Long Term Care Choices	Provides homemaker, personal care, sitter service, and home delivered meals to elderly and adults 18 years or older with a disability.
Foster Grandparents- FGP	Provides stipend volunteer opportunities for limited income persons age 55 and over to give support services to children with "special needs" in the community
Rebuild and Recover – Lincoln Co.	A one-time grant to help victims of the April 2014 tornado in Lincoln County.
Senior Community Service Employment Program - Title V	Assists economically disadvantaged people age 55 and older by providing immediate supplemental income, work experience, training and assistance with placement in permanent employment situations.
Low Income Energy Assistance Program - LIHEAP	Provides financial assistance for heating costs to elderly, handicapped and low income persons.
Community Services Block Grant - CSBG	Provides access to programs and services needed by elderly, handicapped and low-income persons through Neighborhood Service Centers.
Social Services Block Grant/Protective Service Homemaker	Provides support services to adults who have been threatened with abuse, neglect, or exploitation.
Emergency Food Assistance Program	Provide USDA donated food products to low income households at distribution held quarterly in each of our thirteen counties.
Weatherization Assistance Program	To improve energy efficiency and reduce energy costs of low income households by utilizing energy efficient materials.
Community Corrections Program	Provide alternative to incarceration for non-violent felony offenders.
Alcohol/Drug Safety Education	A court ordered education program providing a minimum of 12 hours of education pertaining to substance abuse, physiological and psychological aspects of alcohol and drug use.
Head Start/Early Head Start	Provide comprehensive educational opportunities for low-income and special needs children and empower families.
Food Service Program	Provides a hot nutritious noon-time meal to individuals for a fee without limited qualifications.
Nutrition Services for the elderly	Provides a hot nutritious noon-time meal at congregate meal sites for individuals 60 years of age and older, and delivers meals to eligible homebound.
Ensure	For sale to the public, with no qualifications, at a discounted price.
Catering	The Nutrition Program offers full service catering to the public for a fee, depending on what you order. The funds from catering help generate enough income to purchase equipment as needed and to help sustain the Nutrition program at five days a week.
Community Representative Payee Program	Provides money management services to assist persons who are incapable of keeping track of financial matters. Must receive Social Security or disability benefit and certified by a physician to be incapable of money management.
Private Pay Homemaker Services	Provides light housekeeping and respite sitter services, on a fee basis, with no limiting qualifications.
Volunteer Income Tax Program (VITA)	Volunteers complete annual tax returns for low and moderate income taxpayers free of charge.
Fingerprinting Service – Lewis County	Provides fingerprinting services to the public.



## SCHRA SENIOR STAFF



**Pat Bennett, Network Administrator**



**Donna Brazier, Program Director**



**Bobbie Cox, Program Director**



**Patsy Freeman, Executive Secretary**



**Laure Hopper, Program Director**



**Judy McLeod, Program Director**



**Cindy Miles, Program Director**



**Pamela Morris, Program Director**



**Kenneth Parker, Maint. Officer**



**Scarlet Patterson , Human Res. Mgr.**



**Jim Reynolds, Fiscal Officer**



## **SOUTH CENTRAL HUMAN RESOURCE AGENCY**

### **NEIGHBORHOOD SERVICE CENTERS**

<b>BEDFORD COUNTY</b>	200 Dover St. Shelbyville, TN 37160	488-3062
<b>COFFEE COUNTY</b>	414 Wilson Avenue Tullahoma, TN 37388	461-0041
<b>FRANKLIN COUNTY</b>	107 N. Porter St., Suite 5 Winchester, TN 37398	967-1438
<b>GILES COUNTY</b>	923 E. College St., Suite 104 Pulaski, TN 38478	363-5382
<b>HICKMAN COUNTY</b>	101 College St. Centerville, TN 37033	729-5921
<b>LAWRENCE COUNTY</b>	15 Public Square Lawrenceburg, TN 38464	762-7863
<b>LEWIS COUNTY</b>	43 Smith Avenue Hohenwald, TN 38462	796-4825
<b>LINCOLN COUNTY</b>	1437 Winchester Hwy. Fayetteville, TN 37334	433-7182
<b>MARSHALL COUNTY</b>	1572 Old Columbia Hwy. Lewisburg, TN 37091	359-6393
<b>MAURY COUNTY</b>	208 West 5 <sup>th</sup> Street. Columbia, TN 38401	388-1173
<b>MOORE COUNTY</b>	251 Majors Blvd. Lynchburg, TN 37359	759-7827
<b>PERRY COUNTY</b>	100 North Popular St. Linden, TN 37096	589-2130
<b>WAYNE COUNTY</b>	525 B Highway 64 E Waynesboro, TN 38485	722-3717

(931) area code

## **OVERVIEW OF SCHRA REGULATORY BODIES THE GOVERNING BOARD, EXECUTIVE COMMITTEE & POLICY COUNCIL**

The corporate powers of the South Central Human Resource Agency (SCHRA) are vested in its Governing Board, which is responsible for fulfilling Agency objectives and establishing policy guidelines and direction. The SCHRA Governing Board has delegated authority to the Executive Committee of the South Central Tennessee Development District (SCTDD) to act for it, and has authorized the Policy Council to administer Agency activities within the framework of established policies and in conformance with Federal/State program guidelines.

The SCHRA Governing Board is composed of representatives from each of the 13 counties that the Agency serves. Membership consists of the county executive/mayor of each county, the mayor of each municipality, thirteen human resource representatives appointed by the county mayor/executive, and one state senator and one state representative whose districts lie within the Development District.

Similarly, the Executive Committee of the SCTDD is comprised of 13 county/metro executives, three minority representatives, one state senator, one state representative, and six city mayors; and, as authorized, acts for the Governing Board.

The membership of the Policy Council is comprised of one third elected public officials currently holding office, one third are persons chosen in accordance with democratic selection procedures to assure that they are representatives of the poor in the area they serve, and the remainder members are officials or members of business, industry, religious, welfare, education, and other major groups with interest in the community. This is known as a tri-partite board to insure compliance with the Community Services Block Grant Act.

Additionally, serving on the Policy Council in a voting status, is a Head Start Policy Council Representative, and in a non-voting status a Licensed Attorney, Financial Management Representative, and an Early Childhood Education Representative. These seats on our board are to meet the requirements of the Head Start Act.

The Policy Council meets six times (bi-monthly) a year; the Executive Committee of the SCTDD, acting for the SCHRA Governing Board, meets in concert with and ratifies Policy Council Actions including program budgets, proposals, and contracts approved by the Policy Council. The SCHRA Governing Board meets annually.

The members of these bodies play a critical role in overseeing programs, ratifying policies and helping to plan the future of our Agency. Without a strategy based on knowledge and placed in the hands of competent and concerned individuals, we would have only random ideas without a guiding purpose or direction.

**SOUTH CENTRAL HUMAN RESOURCE AGENCY  
OFFICERS 2014-2015**



**MAYOR JANET VANZANT  
Policy Council/Governing Board  
CHAIRPERSON**



**Mayor Joe Boyd Liggett  
Policy Council/Governing Board  
Vice Chairperson**



**Mrs. Joanne Lord  
Policy Council Secretary**



**Mayor Wallace Cartwright  
Governing Board Secretary**

**2014- 2015 BOARD OFFICERS (at June 30, 2015)**

**SCHRA GOVERNING BOARD/SCHRA EXECUTIVE COMMITTEE:**

Giles County Mayor Janet Vanzant.....Chairperson  
Marshall County Joe Boyd Liggett.....Vice-Chairman  
Shelbyville Mayor Wallace Cartwright.....Secretary

**SCHRA POLICY COUNCIL:**

Giles County Mayor Janet Vanzant.....Chairperson  
Marshall County Mayor Joe Boy Liggett.....Vice-Chairperson  
Mrs. Joanne Lord.....Secretary

**SCHRA POLICY COUNCIL COMMITTEES (at June 30, 2015):**

**BUDGET/STATE APPROPRIATIONS:**

County Mayor Janet Vanzant, Chr.  
County Mayor Jason Rich  
Mrs. Barbara Boyett  
County Mayor Richard Stewart  
Mr. Dolan Eady  
Metro/County Mayor Sloan Stewart

**GRIEVANCE:**

County Mayor Eugene Ray, Chr.  
County Mayor Gary Cordell  
Mr. Dolan Eady  
Ms. Sue Turnbow  
Ms. Melanie Smith  
Mr. David Duren

**PROPERTY:**

County Mayor Joe Boyd Liggett, Chrm.  
Mr. Tom Holland, Financial Rep.  
Mr. Eugene Richardson  
Attorney Cathy Conley, Legal Rep.  
Mrs. Joanne Lord  
Mrs. Nancy Hibler  
County Mayor Shaun Lawson  
County Mayor T. R. Williams

**PERSONNEL:**

Mrs. Sandy Calvert, Chairperson  
Mr. Charles Sain  
County Mayor Terry Richardson  
Mr. Willie Lee Leslie  
Ms. Shirley DeVore  
County Mayor Bill Newman

**NOMINATING/BY-LAWS:**

Mr. Will P. Martin, Chr.  
Mr. David Duren  
County Mayor Bill Webb  
County Mayor Joe Boyd Liggett  
County Mayor Gary Cordell

**PROGRAM APPEALS:**

County Mayor Bill Newman  
Mr. Willie Lee Leslie  
City Mayor Wallace Cartwright  
Mr. Dolan Eady  
Ms. Barbara Boyett

**CSBG Service Priority Setting:**

County Mayor Terry Richardson, Chairman  
Mr. Will P. Martin  
County Mayor Charles Norman  
vacant  
Ms. Sandy Calvert  
Mrs. Priscilla McNairy

**SOUTH CENTRAL HUMAN RESOURCE AGENCY  
GOVERNING BOARD 2014-2015\***

---

**BEDFORD COUNTY**

County Mayor Eugene Ray  
Mayor Dennis Webb-Bell Buckle  
Mayor Rachel P. Swift-Normandy  
Mayor Wallace Cartwright-Shelbyville  
Mayor Thomas Hurt-Wartrace  
Mr. Will P. Martin

**COFFEE COUNTY**

County Mayor Gary Cordell  
Mayor Lonnie Norman-Manchester  
Mayor Lane Curlee-Tullahoma  
Mr. Charles Sain

**FRANKLIN COUNTY**

County Mayor Richard Stewart  
Mayor Joyce Brown-Cowan  
Mayor Robin Smith-Decherd  
Mayor David Kelley-Estill Springs  
Mayor Patrick Matthews-Huntland  
Mayor Terry Harrell-Winchester  
Ms. Melanie Smith

**GILES COUNTY**

County Mayor Janet Vanzant  
Mayor Tim McConnell-Ardmore  
Mayor Pat Ford-Pulaski  
Mayor Carolyn Thompson-Elkton  
Mayor Charles Jett-Lynnville  
Mayor Tracy Wilburn-Minor Hill  
Mrs. Priscilla McNairy

**HICKMAN COUNTY**

County Mayor Shaun Lawson  
Mayor Gary Jacobs-Centerville  
Ms. Shirley DeVore

**LAWRENCE COUNTY**

County Executive T. R. Williams  
Mayor Rex Johnson-Ethridge  
Mayor Keith Durham-Lawrenceburg  
Mayor Jesse Turner-Loretto  
Mayor Bubba Carter-St. Joseph  
Ms. Sandy Calvert

**LEWIS COUNTY**

County Mayor Bill Webb  
Mayor Danny McKnight-Hohenwald  
Ms. Sue Turnbow

**LINCOLN COUNTY**

County Mayor Bill Newman  
Mayor Jon Law-Fayetteville  
Mayor Phil Bolander-Petersburg  
Mr. Willie Lee Leslie

**MARSHALL COUNTY**

County Mayor Joe Boyd Liggett  
Mayor Danny Bingham-Chapel Hill  
Mayor Amos Davis-Cornersville  
Mayor Jim Bingham-Lewisburg  
Ms. Barbara Boyett

**MAURY COUNTY**

County Mayor Charles Norman  
Mayor Dean Dickey-Columbia  
Mayor Bob Shackelford-Mt. Pleasant  
Mayor Rick Graham-Spring Hill  
Mr. Eugene Richardson

**MOORE COUNTY**

Metropolitan Executive Sloan Stewart  
Mr. Dolan Eady

**PERRY COUNTY**

County Mayor Terry Richardson  
Mayor Jim Azbill-Linden  
Mayor Robby Moore-Lobelville  
Mrs. Joanne Lord

**WAYNE COUNTY**

County Mayor Jason Rich  
Mayor Randy Burns-Clifton  
Mayor Robert Vencion-Waynesboro  
Mayor Glenn Brown-Collinwood  
Mr. David Duren

Representative Judd Matheny  
Senator Jim Tracy

\*at June 30, 2015

**SOUTH CENTRAL HUMAN RESOURCE AGENCY  
POLICY COUNCIL 2014-2015**

**BEDFORD COUNTY**

County Mayor Eugene Ray  
Mr. Will P. Martin

**COFFEE COUNTY**

County Mayor Gary Cordell  
Mr. Charles Sain  
Attorney Cathy Conley, Legal Rep.

**FRANKLIN COUNTY**

County Mayor Richard Stewart  
Mrs. Melanie Smith  
Mrs. Nancy Hibler, HS/EHS Chairperson

**GILES COUNTY**

County Mayor Janet Vanzant  
Mrs. Priscilla McNairy

**HICKMAN COUNTY**

County Mayor Shaun Lawson  
Ms. Shirley DeVore

**LAWRENCE COUNTY**

County Executive T. R. Williams  
Mrs. Sandy Calvert

**LEWIS COUNTY**

County Mayor Bill Webb  
Ms. Sue Turnbow

**LINCOLN COUNTY**

County Mayor Bill Newman  
Mr. Willie Lee Leslie  
Mr. Tom Holland, Financial Rep.

**MARSHALL COUNTY**

County Mayor Joe Boyd Liggett  
Ms. Barbara Boyett, Educ. Rep.

**MAURY COUNTY**

County Mayor Charles Norman  
Mr. Eugene Richardson

**MOORE COUNTY**

Metropolitan Executive Sloan Stewart  
Mr. Dolan Eady

**PERRY COUNTY**

County Mayor Terry Richardson  
Ms. Joanne Lord

**WAYNE COUNTY**

County Mayor Jason Rich  
Mr. David Duren



**SOUTH CENTRAL HUMAN RESOURCE AGENCY  
COMBINED STATEMENT OF REVENUES AND EXPENDITURES  
FOR THE TWELVE MONTHS ENDED JUNE 30, 2015**

**REVENUES**

Head Start	\$7,035,945.96
Head Start USDA	339,995.06
Head Start Training & Technical Assistance	82,018.44
Early Head Start	574,308.93
Early Head Start USDA	15,953.00
EHS Training & Technical Assistance	14,173.67
EHS Expansion (start-up)	299,970.60
EHS Expansion	80,842.72
EHS Expansion Training & Technical Assistance	15,628.29
Head Start Restricted	5,641.72
Community Services Block Grant	762,016.40
Community Services Block Grant restricted	5,300.04
Protective Service Homemaker Program (SSBG)	216,088.54
Low Income Home Energy Assistance Program - THDA	679,754.13
Low Income Home Energy Assistance Program – THDA	3,159,607.59
Weatherization Assistance Program	9,488.01
Rebuild & Recover – Lincoln County	168,807.79
State Appropriations	185,655.00
SCHRA Discretionary Account	33,817.13
SCHRA Special Project	2,587.19
Alcohol & Drug Safety Program	15,402.06
Ensure	58,770.26
Nutrition Services for the Elderly	1,385,112.97
Food Service Program	1,126,746.53
Homemaker Services	378,309.12
Community Corrections Program	474,618.16
Fingerprinting Services	60.00
DNA	555.50
Senior Community Services Project Title V - SSAI	646,770.42
Volunteer Income Tax Assistance	23,487.71
Foster Grandparents Program	267,175.32
Foster Grandparents Program – Restricted	-
TN Emergency Food Assistance Program PY' 9/14	40,899.48
TN Emergency Food Assistance Program PY' 9/15	50,141.84
TN Emergency Food Assistance Program Restricted	918.00
Community Representative Payee Program	<u>102,187.00</u>
<b>TOTAL REVENUES</b>	<b><u>\$18,258,754.58</u></b>

## COMBINED STATEMENT OF REVENUES AND EXPENDITURES cont'd

### EXPENDITURES

Head Start	\$7,035,946.21
Head Start USDA	339,973.55
Head Start Training & Technical Assistance	82,018.44
Early Head Start	574,308.93
Early Head Start USDA	16,238.89
EHS Training & Technical Assistance	14,173.67
EHS Expansion (start-up)	299,970.60
EHS Expansion	80,842.72
EHS Expansion Training & Technical Assistance	15,628.29
Head Start – Restricted	4,222.93
Community Services Block Grant - Restricted	1,829.20
Community Services Block Grant	762,016.40
Protective Service/Homemaker Program (SSBG)	238,713.99
Low Income Home Energy Assistance Program - THDA	679,754.13
Low Income Home Energy Assistance Program - THDA	3,159,607.59
Weatherization Assistance Program	9,488.01
Rebuild & Recover – Lincoln County	168,807.79
State Appropriations	131,064.20
SCHRA Discretionary Account	35,780.55
SCHRA Special Project	2,157.99
Alcohol & Drug Safety Program	11,760.03
Ensure	56,082.25
Nutrition Services for the Elderly	1,424,241.96
Food Service Program	1,140,044.56
Homemaker Services - SCTDD	363,272.39
Community Corrections Program	474,618.16
Fingerprinting Program	8.67
DNA	31.77
Senior Community Services Project Title V – SSAI	646,770.42
Volunteer Income Tax Assistance	25,437.47
Foster Grandparents Program	267,175.32
Foster Grandparents Program – Restricted	-
TN Emergency Food Assistance Program PY'14	40,899.48
TN Emergency Food Assistance Program PY'15	50,141.84
TN Emergency Food Assistance Program – Restricted	-
Community Representative Payee Program	110,639.99
<b>TOTAL EXPENDITURES</b>	<b><u>\$ 18,263,668.39</u></b>
<b>Excess of Revenues Over (Under) Expenditures</b>	<b><u>\$ (4,913.81)</u></b>

**SOUTH CENTRAL HUMAN RESOURCE AGENCY  
COMBINED BALANCE SHEET  
JUNE 30, 2015**

**ASSETS**

Cash	\$ 579,702.58
Cash - Liquid Funds Account - Restricted	272,554.27
Local Gov't Investment Pool	30,182.70
Certificate of Deposit - Construction	460,941.56
Cash – Community Representative Payee Program	397,873.66
Inventory - Consumable Supplies	62,868.26
Inventory – Commodities	178,383.52
Prepayments	8,571.63
Due from Grantors	<u>1,219,663.87</u>
<b>Current Assets</b>	<b><u>\$3,210,742.05</u></b>

Land & Buildings	1,450,222.74
Leasehold Improvements	966,906.33
Vehicles & Other Equipment	1,278,459.36
Accumulated Depreciation	<u>(1,603,120.42)</u>

**TOTAL ASSETS** **\$5,303,210.06**

**LIABILITIES AND FUND EQUITY**

**Liabilities:**

Accounts Payable	\$ 932,421.32
Withholdings & Benefits Payable	111,801.83
Accrued Audit Fee	35,500.00
Accrued Leave	264,947.32
Due to CRPP	-
Due to Grantors	435,832.67
Due to Grantors – Commodities	178,383.52

Excess Expenditures at June 30, 2015 (4,913.81)

Notes Payable – Building -

**TOTAL LIABILITIES** **\$ 1,953,972.85**

**Fund Equity:**

Investment in Land & Buildings	\$ 1,450,222.74
Investment in Leasehold Improvements	966,906.33
Investment in other Fixed Assets	1,278,459.36
Accumulated Depreciation	<u>(1,603,120.42)</u>

Fund Balance – Restricted 530,051.01

Fund Balance - Unrestricted 726,718.19

**TOTAL FUND EQUITY** **\$3,349,237.21**

**TOTAL LIABILITIES AND FUND EQUITY** **\$5,303,210.06**

This statement does not include in-kind contribution activities.  
This statement for the twelve months ending June 30, 2015 is subject to audit adjustments.

**SOUTH CENTRAL HUMAN RESOURCE AGENCY  
OPERATING BUDGET 2014/2015**

PROGRAM	PROJECT PERIOD	FUNDING SOURCE	FUNDING AVAILABLE	FUNDS UTILIZED
<b>AGING</b>				
<b>Nutrition Services for the Elderly:</b>				
Title III-C Congregate Meal Service	07-01-14/06-30-15	South Central TN Development District	613,686	609,836
Title III-C Home Delivered Meal Service	07-01-14/06-30-15	South Central TN Development District	429,576	431,231
Title III-C Home Delivered Meal Service	07-01-14/06-30-15	State of Tennessee & Local Governments	16,718	16,718
OPTIONS Home Delivered Meal Service	07-01-14/06-30-15	South Central TN Development District	83,441	87,198
Family Care Giver Home Delivered Meal Service	07-01-14/06-30-15	South Central TN Development District	12,914	13,579
AmeriChoice LTC Home Delivered Meal Service	07-01-14/06-30-15	AmeriChoice	115,557	121,523
AmeriGroup LTC Home Delivered Meal Service	07-01-14/06-30-15	AmeriGroup	67,568	77,971
Blue Care LTC Home Delivered Meal Service	07-01-14/06-30-15	BlueCare	16,285	17,102
Private Pay Home Delivered Meal Service	07-01-14/06-30-15	Agency Performance Based	47,012	49,085
Ensure Program	07-01-14/06-30-15	Agency Performance Based	58,770	56,082
<b>Homemaker Services for the Elderly:</b>				
Title III-B Homemaker Services	07-01-14/06-30-15	South Central TN Development District	49,944	44,956
OPTIONS Homemaker Services	07-01-14/06-30-15	South Central TN Development District	69,993	63,001
Family Caregiver Homemaker Services	07-01-14/06-30-15	South Central TN Development District	12,478	12,454
OPTIONS Personal Care Services	07-01-14/06-30-15	South Central TN Development District	14,841	13,436
Family Caregiver Personal Care Services	07-01-14/06-30-15	South Central TN Development District	130	131
AmeriChoice LTC Personal Care Services	07-01-14/06-30-15	AmeriChoice	72,225	66,045
AmeriGroup LTC Personal Care Services	07-01-14/06-30-15	AmeriGroup	18,177	16,456
Bluecare LTC Personal Care	07-01-14/06-30-15	Bluecare	8,725	8,462
Family Caregiver Respite/Sitter Services	07-01-14/06-30-15	South Central TN Development District	16,428	16,494
Bluecare LTC Respite Services	07-01-14/06-30-15	Bluecare	247	281
AmeriChoice LTC Respite Services	07-01-14/06-30-15	AmeriChoice	5,681	6,456
AmeriChoice LTC Attendant Care Services	07-01-14/06-30-15	AmeriChoice	82,941	87,186
AmeriGroup LTC Attendant Care	07-01-14/06-30-15	AmeriGroup	13,153	13,932
Bluecare LTC Attendant Care	07-01-14/06-30-15	Bluecare	13,346	13,983
<b>Foster Grandparent Program</b>	07-01-14/06-30-15	Corp. for National & Community Service	277,062	267,175
<b>EMPLOYMENT AND TRAINING</b>				
Senior Community Service Employment Program	07-01-14/07-30-15	Senior Service America, Inc.	676,382	646,770

PROGRAM	PROJECT PERIOD	FUNDING SOURCE	FUNDING AVAILABLE	FUNDS UTILIZED
<b>CHILDREN AND YOUTH SERVICES</b>				
Head Start	07-01-14/06-30-15	U. S. Dept. of Health & Human Services	7,037,751	7,035,946
Head Start Training & Technical Assistance	07-01-14/06-30-15	U. S. Dept. of Health & Human Services	82,214	82,018
Head Start - USDA	07-01-14/06-30-15	TN Department of Human Services	512,422	339,974
Head Start - Restricted Fund	07-01-14/06-30-15	Local	5,642	4,223
Early Head Start	07-01-14/06-30-15	U. S. Dept. of Health & Human Services	574,361	574,309
Early Head Start Training & Technical Asst.	07-01-14/06-30-15	U. S. Dept. of Health & Human Services	14,175	14,174
Early Head Start - USDA	07-01-14/06-30-15	TN Dept. of Human Services	33,362	16,239
Early Head Start - Expansion (start-up)	03-01-15/07-30-16	U. S. Dept. of Health & Human Services	300,000	299,971
Early Head Start - Expansion	03-01-15/07-30-16	U. S. Dept. of Health & Human Services	2,200,000	80,843
Early Head Start - Expansion T & TA	03-01-15/07-30-16	U. S. Dept. of Health & Human Services	55,000	15,628
<b>ENERGY ASSISTANCE</b>				
Low Income Home Energy Assistance Program	07-01-14/09-30-14	Tennessee Department of Human Services	840,586	679,754
Low Income Home Energy Assistance Program	11-01-14/09/30/15	TN Housing Development Agency	3,805,415	3,159,608
Weatherization Assistance Program	11-01-14/06-30-16	Tennessee Housing Development Agency	302,558	9,488
<b>CORRECTIONS AND REHABILITATIONS</b>				
Community Corrections Program	07-01-14/06-30-15	TN Department of Corrections	495,866	436,929
Community Corrections Program	07-01-14/06-30-15	Local Performance Based	37,800	37,689
DUI/Alcohol Safety Services	07-01-14/06-30-15	Local Performance Based	15,402	11,760
Fingerprinting Services	07-01-14/06-30-15	Local Performance Based	60	9
DNA Services	07-01-14/06-30-15	Local Performance Based	556	32
<b>SUPPORT AND EMERGENCY SERVICES</b>				
Social Services Block Grant Homemaker Program	07-01-14/06-30-15	Tennessee Department of Human Services	190,989	190,989
Social Services Block Grant Homemaker Program	07-01-14/06-30-15	Local Governments	25,100	25,100
Social Services Block Grant Homemaker Program	07-01-14/06-30-15	State and Local Appropriations	22,625	22,625
Tennessee Emergency Food Assistance Program	10-01-14/09-30-15	Tennessee Department of Agriculture	40,899	40,899
Tennessee Emergency Food Assistance Program	10-01-14/06-30-15	Tennessee Department of Agriculture	97,000	50,142
TN Emergency Food Assistance Prog -Restricted	07-01-14/06-30-15	Agency	918	-
Community Representative Payee Administration	07-01-14/06-30-15	Agency Performance-based	102,187	110,640

Volunteer Income Tax Assistance	10-01-14/06-30-15	United Way of Metropolitan Nashville	30,000	23,487
Volunteer Income Tax Assistance	10-01-14/06-30-15	State of TN and Local Governments	1,950	1,950
Build and Recover – Lincoln County	06-01-14/05-31-15	Tennessee Housing Development Agency	399,891	168,808
<b>INFORMATION AND REFERRAL</b>				
Community Services Block Grant	07-01-13/06-30-14	Tennessee Department of Human Services	1,117,192	762,016
Community Services Block Grant – Restricted	07-01-13/06-30-14	South Central TN Development District	5,300	1,829
<b>PROGRAM SUPPORT</b>				
State and Local Appropriations	07-01-14/06-30-15	State of Tennessee & Local Governments	131,064	131,064
<b>AGENCY ENTERPRISE</b>				
Food Services	07-01-14/06-30-15	Agency	1,126,747	1,126,747
Food Services	07-01-14/06-30-15	State of Tennessee and Local Governments	13,298	13,298
Service Project	07-01-14/06-30-15	Agency	2,587	2,158
Agency Discretionary Fund	07-01-14/06-30-15	Agency	33,817	35,781
<b>GRAND TOTAL</b>			<b><u>\$22,448,013</u></b>	<b><u>\$18,263,669</u></b>

# **NUTRITION SERVICES FOR THE ELDERLY**

## **CONGREGATE MEALS**

**Donna Brazier, Program Director**

**STAFF:** 40

**FUNDING SOURCE:** SCTDD/TCOA and participant contributions

**CLIENTS SERVED:** 1,519

**PROGRAM OBJECTIVE:** To help the frail and elderly individuals aged 60 or over eat adequately by providing a noon-time meal in a congregate or home delivered setting. The development of skills and/or knowledge to help the elderly select and prepare nourishing and well-balanced meals is also of primary concern. The program is committed to insuring the dignity of every person and underlining their importance through continued social contact and activities which minimize the need for institutionalism in nursing homes or other comparable facilities.



**SERVICES PROVIDED:** Meals were served at 21 nutrition meal sites. The following is a break-out by county of participants and meals served:

County	Clients	Meals	County	Clients	Meals
Bedford	108	7,869	Lincoln	83	6,263
Coffee	144	12,372	Marshall	179	5,737
Franklin	105	7,438	Mauy	218	7,371
Giles	69	11,378	Moore	23	2,176
Hickman	44	1,940	Perry	163	10,381
Lawrence	115	7,436	Wayne	168	5,990
Lewis	100	6,045	<b>TOTAL</b>	<b>1,519</b>	<b>92,396</b>

**PARTICIPANT ELIGIBILITY:** A person 60 or older, the spouse of the person or a disabled dependent of a person 60 years old, regardless of their age, are eligible to participate in Nutrition services.

**ACCOMPLISHMENTS:** Supplemented food to meal sites, Volunteer Appreciation Days, the Foster Grandparent Program meetings, and served Head Start.

# **NUTRITION SERVICES FOR THE ELDERLY**

## **HOME DELIVERED MEALS**

**Donna Brazier, Program Director**

**STAFF:** 40

**BUDGET:** Based on a unit cost of \$5.94 hybrid (cold) meals; \$6.93 hot meals

**FUNDING SOURCE:** South Central TN Development District/TCOA and participant contributions

**CLIENTS SERVED:** 262

**PROGRAM OBJECTIVE:** To help the frail and elderly individuals aged 60 or over eat adequately by providing a noon-time meal in a home delivered setting. The development of skills and/or knowledge to help the elderly select and prepare nourishing and well-balanced meals is also of primary concern. Meals are provided to those who have limited mobility which may impair their capacity to shop and cook for themselves. The program is committed to insuring the dignity of every person and underlining their importance through continued social contact and activities which minimize the need for institutionalism in nursing homes or other comparable facilities.



**SERVICES PROVIDED:** Home Delivered Meals

County	Clients	Meals	County	Clients	Meals
Bedford	15	4,906	Lincoln	15	3,776
Coffee	31	7,151	Marshall	27	7,400
Franklin	28	7,162	Maury	42	9,023
Giles	22	5,431	Moore	05	1,226
Hickman	12	3,647	Perry	12	2,551
Lawrence	13	3,501	Wayne	23	4,985
Lewis	17	3,542	<b>TOTAL</b>	<b>262</b>	<b>64,301</b>

***Volunteers are a vital part of our Home-Delivered Meal programs and the success of the programs would not be possible without them.***



## **HOME & COMMUNITY BASED PROGRAM (OPTIONS)**

### **CAREGIVER, OPTIONS, LONG TERM CARE CHOICES HOME DELIVERED MEALS**

**Donna Brazier, Program Director**

**PROGRAM STAFF:** 40

**BUDGET:** Based upon a unit cost of \$5.93 hybrid (cold) meals; \$6.94 hot meals

**FUNDING SOURCE:** South Central TN Development District, AmeriGroup, AmeriChoice, and Blue Care

**PROGRAM OBJECTIVE:** To help the frail and disabled aged 18 years or older to eat adequately. The program provides a noon-time meal in a home delivered setting. The program is committed to insuring the dignity of every person and underlining their importance through continued social contact and activities. This helps minimize the need for institutionalism in nursing homes or other comparable facilities.

**PROGRAM ELIGIBILITY:** A person 18 years of age or older who has limited mobility that may impair their ability to cook for themselves.

**SERVICES PROVIDED:** The following three charts show the number of home-delivered meals that were provided through June 30, 2015:

<b>OPTIONS</b>			<b>OPTIONS</b>		
<b>County</b>	<b>Meals</b>	<b>Clients</b>	<b>County</b>	<b>Meals</b>	<b>Clients</b>
Bedford	942	08	Lincoln	0	0
Coffee	417	04	Marshall	2,453	22
Franklin	589	06	Mauzy	3,041	28
Giles	370	05	Moore	10	01
Hickman	91	01	Perry	677	04
Lawrence	2,281	15	Wayne	984	05
Lewis	834	06	<b>TOTAL</b>	<b>12,689</b>	<b>105</b>

<b>CAREGIVER</b>			<b>CAREGIVER</b>		
<b>County</b>	<b>Meals</b>	<b>Clients</b>	<b>County</b>	<b>Meals</b>	<b>Clients</b>
Bedford	0	0	Lincoln	0	0
Coffee	389	02	Marshall	246	01
Franklin	281	01	Mauzy	258	01
Giles	0	0	Moore	0	0
Hickman	0	0	Perry	0	0
Lawrence	269	02	Wayne	231	02
Lewis	363	03	<b>Total</b>	<b>2,037</b>	<b>12</b>

<i>Long Term Care Choices</i>			<i>Long Term Care Choices</i>		
<b>County</b>	<b>Meals</b>	<b>Clients</b>	<b>County</b>	<b>Meals</b>	<b>Clients</b>
Bedford	4,561	16	Lincoln	3,307	10
Coffee	5,786	23	Marshall	2,313	07
Franklin	1,043	05	Mauy	3,800	17
Giles	2,230	11	Moore	269	02
Hickman	913	05	Perry	1,205	04
Lawrence	4,489	16	Wayne	346	01
Lewis	1,431	07	<b>TOTAL</b>	<b>31,693</b>	<b>124</b>

**FOOD SERVICE PROGRAM:** The Nutrition Program provides a hot, nutritious noon-time meal to individuals for a fee without limited qualifications. These meals can be delivered to your home or place of business.

**ENSURE PROGRAM:** Ensure is available by the case in assorted flavors to the public at a discounted price. Not to be resold.

**CATERING SERVICE:** The Nutrition Program offers professional catering services to help generate enough income to purchase equipment as needed and to help sustain the Nutrition Program at five days a week. The catering dollars pay for the cost of food, utility maintenance and labor cost of each job. The remaining money goes back into the program.



Without the additional dollars, the Nutrition Congregate Program would only be in operation four days a week. This would mean that 1850 – 2000 meals per month would be cut and create a higher number of seniors going hungry in our communities. We strive hard to continue keeping seniors fed and in their homes instead of an institution of some kind.

For catering services please contact the Nutrition Department at 931-433-7182, ext.138 or 1-800-221-2642, ext. 138.

## **HOMEMAKER SERVICES**

**TITLE III-B HOMEMAKER, OPTIONS, FAMILY CAREGIVER, CHOICES, LONG-TERM CARE, & PERSONAL CARE**

**Donna Brazier, Program Director**

**PROGRAM COORDINATOR:** Cindy Campbell

**SUPPORT STAFF:** Jo Ann Reynolds

**PROGRAM STAFF:** 44

**BUDGET:** per unit reimbursement rate

**FUNDING SOURCE:** South Central TN Development District,  
AmeriGroup, AmeriChoice

**CLIENTS:** 103



**PROGRAM OBJECTIVE:** To provide homemaker, respite and/or personal care services to individuals 60 and over or who are disabled or incapacitated but wish to remain in their homes. These services may comprise basic housekeeping tasks, assist with bathing and more as determined by the SCTDD/AAAD.

**SERVICES PROVIDED:** The chart on the next page is a report of activities and services for the year on the Options Programs, National Family Caregiver Programs, Title IIIB Homemaker and the Choices Program. These programs provide homemaker, personal care assistance, attendant care and respite sitter care to the frail elderly and adults with disabilities in our area. The chart also reflects the total clients served and units of service (hours) provided for each service.

**PARTICIPANTS ELIGIBILITY:** Individuals 60 years of age or an adult 18 years of age and older with a disability who is at risk of losing his or her independence is eligible for the program following an in depth assessment through the SCTDD/AAAD.

### **PRIVATE PAY HOMEMAKER SERVICES are available.**

This service provides light housekeeping and respite sitter services, on a fees basis, with no limiting qualifications. Call 931-433-7182, ext. 120 or 1-800-221-2642, ext.120, for prices and more information.

**2014-2015 HOMEMAKER SERVICES**

County	State Funded Homemaker		State Funded Personal Care		Title III Homemaker		Caregiver Homemaker		Choices Personal Care		Choices Attend. Care		Choices In-Home Resp	
	Clients	Hours	Clients	Hours	Clients	Hours	Clients	Hours	Clients	Hours	Clients	Hours	Clients	Hours
Bedford	3	156	0	0	3	312	0	0	0	0	0	0	0	0
Coffee	4	416	0	0	3	312	0	0	1	624	1	312	0	0
Franklin	8	884	1	104	1	104	0	0	1	312	0	0	0	0
Giles	4	442	1	104	1	104	0	0	0	0	2	2652	0	0
Hickman	4	416	1	52	5	624	0	0	0	0	0	0	0	0
Lawrence	3	312	0	0	1	104	1	156	1	1872	1	702	0	0
Lewis	3	364	2	156	3	260	1	156	0	0	0	0	0	0
Lincoln	1	104	1	104	2	208	1	156	5	1924	2	3848	0	0
Marshall	1	104	0	0	0	0	0	0	0	0	0	0	0	0
Maury	0	0	1	156	2	156	1	104	0	0	0	0	0	0
Moore	0	0	0	0	1	104	0	0	0	0	0	0	0	0
Perry	1	52	1	52	1	78	0	0	0	0	0	0	0	0
Wayne	1	156	0	0	1	78	3	624	0	0	0	0	0	0
<b>Total Clients</b>	<b>33</b>		<b>8</b>		<b>24</b>		<b>7</b>		<b>8</b>		<b>6</b>		<b>0</b>	
<b>Total Hours</b>		<b>3406</b>		<b>728</b>		<b>2444</b>		<b>1196</b>		<b>4732</b>		<b>7514</b>		<b>0</b>

Per Hour Pay: 20.44      20.32      20.44      18.40      20.32      17.32      16.12

# **FOSTER GRANDPARENT PROGRAM**

**Bobbie Cox, Program Director**

**PROGRAM STAFF:** June Kerrin, Pat Meeks, Nancy Tillet

**FUNDING SOURCE:** Corporation for National & Community Service

**VOLUNTEERS:** 59



**PROGRAM OBJECTIVE:** To provide stipend volunteer opportunities for limited income persons age 55 and over to give supportive services to children with "special needs" in the community.

**SERVICES PROVIDED:** Volunteers (foster grandparents) help infants abandoned at birth, addicted to drugs, assist children and adolescents with learning disabilities, those who have been abused, and/or neglected. Volunteers also help teen parents and their offspring. Foster Grandparents serve in volunteer stations such as Head Start, public schools, day care centers, shelters for abused women and children, and after school programs.

Foster Grandparents and children served are as follows:

COUNTY	VOLUNTEERS	CHILDREN
Bedford	0	0
Coffee	0	0
Franklin	4	21
Giles	8	39
Hickman	0	0
Lawrence	6	30
Lewis	0	0
Lincoln	15	55
Marshall	7	38
Maury	0	0
Moore	0	0
Perry	1	4
Wayne	18	69
<b>Total</b>	<b>59</b>	<b>256</b>



**PROGRAM ELIGIBILITY:** Applicants must be at least 55 years old, willing to serve an average of 20 hours per week and meet 200% income guidelines. Persons with disabilities are welcome to serve. Volunteers receive a modest tax-free allowance or stipend and an annual physical exam.

**ACCOMPLISHMENTS:** We have developed a new collaboration with Gifts In-Kind 360 and Bed, Bath, and Beyond. The FGP volunteers are receiving bedding, pots, pans, sheets, towels, small appliances, and much more.

# **VOLUNTEER INCOME TAX ASSISTANCE (VITA)**

**Diane Bennett, Program Coordinator**

**FUNDING SOURCE:** United Way of Metropolitan Nashville

**COORDINATORS:** 3

**VOLUNTEERS:** 35

VITA is an IRS grant that is designed to help low and moderate income taxpayers have their annual tax return completed by IRS certified volunteers. This is a seasonal program.

SCHRA joined a coalition with United Way of Metropolitan Nashville in 2008 to administer the VITA (Volunteer Income Tax Assistance) Program across the 13 counties that SCHRA serves and have continued this partnership.



In program year FY'15, VITA volunteers e-filed 1,947 tax returns, 74 paper returns, 26 amended returns, and 35 prior year returns, for a total of 2,082 returns. Based on \$250.00 per return, we saved the tax payers in our communities \$520,500. We have applied for the grant again for the upcoming year and hopefully we will be able to continue providing this much needed service. We could not have accomplished this project if it had not been for the 35 dedicated volunteers that assisted us with the preparation of the returns at fourteen (14) sites across our service area.



## **SENIOR COMMUNITY SERVICE EMPLOYMENT PROGRAM** ***(TITLE V Older Worker Program)***

**Pamela Morris, Program Director**

**STAFF:** 6

**FUNDING SOURCE:** Senior Service America, Inc.

**CLIENTS:** 81



**PROGRAM OBJECTIVE:** The South Central Human Resource Agency's Senior Service America, Inc. (SSAI) Title V Program is designed to assist economically disadvantaged people age 55 and over by providing immediate supplemental income, work experience and training at an approved training site, with an immediate goal of more permanent, unsubsidized employment. The program also is dedicated to strengthening families, communities, and our nation by providing older and disadvantaged individuals with opportunities to learn, work, and serve others.

**SERVICES PROVIDED:** The South Central Human Resource Agency SSA/Title V Program serves a twelve (12) county area with an allocated slot level of 81 clients for program year 2014-15 with slots assigned based on Census figures within our service area. We are also serving four (4) additional counties outside of the SCHRA area: Bledsoe, Grundy, Marion, and Sequatchie. Title V clients who cannot immediately be placed into an unsubsidized job receive assistance on finding a job and/or are assigned to eligible non-profit and government agencies for approximately 20 hours of work per week. In these assignments, clients receive valuable work experience and skill training while assisting their host agency in delivering essential community services. They also receive supportive services and training designed to prepare them for unsubsidized employment in the private sector.

<b>CLIENTS SERVED BY COUNTY:</b>			
Bedford	6	Lincoln	13
Bledsoe	14	Marion	12
Coffee	18	Marshall	8
Franklin	13	Mauzy	10
Giles	6	Moore	2
Grundy	8	Perry	2
Lawrence	11	Sequatchie	5
Lewis	2	Wayne	10
		<b>TOTAL</b>	<b>140</b>

**CLIENT ELIGIBILITY:** Clients must be age 55 or above, be a legal resident of the county in which they apply, and be capable of performing tasks involved in the community service employment assignment as stated in the training site description, and must be economically disadvantaged, as determined by the current federally established poverty guidelines - 125% scale.

Most clients are older women, many of whom have been recently widowed or divorced, have little recent work experience outside the home, and are frightened by the prospect of needing to compete for a job just to make ends meet. They are part of a generation that is too proud to accept public assistance and that understands what it means to work hard and do your best. While all need financial assistance, many clients also long for the social interaction - - the chance to continue learning and possibly start a new career and the opportunity to make a real difference in their communities.

**ACCOMPLISHMENTS:** Our 2014-2015 program year was again very challenging and exciting. During the first quarter of the program year, we were able to have over ten (10) participants in unsubsidized employment. Durational limit participants were the reason for our success in meeting our unsubsidized placement goals. The only downside was that we ended up underspent by the end of the year because of so many exits and not being able to keep up enrollments with qualified participants.

By the end of the third quarter, we were able and very luck to enroll Cindy Lewter, who brings to our program her experience with Families First. She will be our participant staff manager and use her special skills to assist our participants with job training, interviewing techniques, etc.

All of our goals were met by the end of the program year and over 24 participants were successful in enriching their lives with unsubsidized employment.

**Facts about Older Workers:**

- Their attendance record is superior.
- They feel a higher level of satisfaction with their jobs.
- They possess an eagerness to learn new skills.
- They can learn even into old age.
- They often need to make additions to retirement income.
- They want to add meaning and purpose to life.
- They like to keep busy.
- They want to make social contacts.
- They need to preserve an identity tied to work.
- They want to use their special skills and education.

*Sources: Sara J. Czaja, Promoting Employment Opportunities for Older Adults, Washington, D. C. ; Richard Swanson, Analysis for Improving Performance, San Francisco, 1996 Berrett-Koehler, pg. 210*



# **LOW INCOME HOME ENERGY ASSISTANCE**

**Cindy Miles, Program Director**

**PROGRAM COORDINATOR:** Lee Ann Keith  
**PROGRAM STAFF:** 4 plus Neighborhood Service Personnel  
**FUNDING SOURCE:** TN Housing Development Agency  
**CLIENTS SERVED:** 8,514



**PROGRAM OBJECTIVE:** To provide assistance to elderly, handicapped and low-income persons with energy used to heat their homes through financial assistance to offset a portion of the cost. Priority for assistance is given to the lowest of income. Priority points are used to determine the amount of payment.

## **LIHEAP SERVICES PROVIDED:**

County	Crisis Assistance		Energy Assistance		Total Crisis & Energy	
	Applications	Payments	Applications	Payments	Applications	Payments
<b>Bedford</b>	105	43,350.00	650	259,350.00	755	302,700.00
<b>Coffee</b>	102	42,600.00	757	299,700.00	859	342,300.00
<b>Franklin</b>	72	29,550.00	610	245,250.00	682	274,800.00
<b>Giles</b>	63	26,250.00	525	213,600.00	558	239,850.00
<b>Hickman</b>	47	19,950.00	600	226,170.00	647	246,120.00
<b>Lawrence</b>	91	37,650.00	1073	427,050.00	1164	464,700.00
<b>Lewis</b>	27	10,800.00	416	163,500.00	443	174,300.00
<b>Lincoln</b>	68	27,900.00	856	340,650.00	924	368,550.00
<b>Marshall</b>	52	20,700.00	647	240,750.00	699	261,450.00
<b>Maury</b>	149	60,300.00	804	307,950.00	953	368,250.00
<b>Moore</b>	8	3,300.00	117	46,350.00	125	49,650.00
<b>Perry</b>	21	7,200.00	150	60,150.00	171	67,350.00
<b>Wayne</b>	43	18,000.00	461	180,150.00	504	198,150.00
<b>Total</b>	<b>848</b>	<b>347,550.00</b>	<b>7,666</b>	<b>3,010,620.00</b>	<b>8,514</b>	<b>3,358,170.00</b>

**Energy and Crisis Assistance** is provided to eligible households through payment to a utility company or propane company.

**PARTICIPANT ELIGIBILITY:** In addition to general eligibility requirements at 150% of the federal poverty guidelines, applicants must be responsible for their own energy costs.

**LIHEAP** fiscal year now runs from October 1 – September 30. The chart above reflects energy assistance from July 1, 2014 through June 30, 2015.

# **COMMUNITY SERVICES BLOCK GRANT**

**Cindy Miles, Program Director**

**PROGRAM COORDINATOR:** Dee Dee Sneed

**PROGRAM STAFF:** 27

**FUNDING SOURCE:** Department of Human Services



**PROGRAM OBJECTIVE:** To provide a wide range of services and activities which will have a measurable and potentially major impact on poverty in the community. The Community Services Block Grant insures access to programs and services by elderly, handicapped and low-income persons through Neighborhood Service Centers in each of our 13 counties where experienced personnel assist in meeting the needs of the low income population.

## **SERVICES PROVIDED:**

<b>COUNTY</b>	<b>Meal Services</b>	<b>Companion Services</b>	<b>CSBG Crisis</b>	<b>Self Sufficiency</b>	<b>Income Management</b>	<b>Health</b>	<b>Employment</b>
<b>Bedford</b>	1,076	1,271	20	10	4	63	12
<b>Coffee</b>	565	745	3	4	3	4	3
<b>Franklin</b>	538	645	6	0	5	4	2
<b>Giles</b>	608	507	4	0	0	48	1
<b>Hickman</b>	734	867	4	0	0	14	0
<b>Lawrence</b>	903	839	3	1	5	10	7
<b>Lewis</b>	486	752	2	0	0	6	2
<b>Lincoln</b>	409	296	2	0	0	3	0
<b>Marshall</b>	1,326	587	6	0	3	6	10
<b>Maury</b>	122	946	33	2	1	33	3
<b>Moore</b>	48	211	1	0	0	10	8
<b>Perry</b>	0	437	0	0	0	10	5
<b>Wayne</b>	412	505	0	0	0	1	0
<b>TOTAL</b>	<b>7,227</b>	<b>8,608</b>	<b>84</b>	<b>17</b>	<b>21</b>	<b>212</b>	<b>53</b>

**CSBG SERVICES PROVIDED cont'd:**

COUNTY	Total # Services Provided	Duplicated # EFAP #HH Served qtr.	Total Number Volunteers	Total Volunteer Hours	Information & Referral
<b>Bedford</b>	2456	923	26	299	4704
<b>Coffee</b>	1327	1309	11	144.5	5989
<b>Franklin</b>	1200	859	17	373	3988
<b>Giles</b>	1168	637	9	139.5	635
<b>Hickman</b>	1619	897	20	274	4014
<b>Lawrence</b>	1768	1115	19	256.5	2477
<b>Lewis</b>	1248	783	9	85	2306
<b>Lincoln</b>	710	1378	11	111	626
<b>Marshall</b>	1938	813	11	131.5	2029
<b>Maury</b>	1140	656	13	173.5	1579
<b>Moore</b>	278	207	5	43	585
<b>Perry</b>	452	519	9	83	2045
<b>Wayne</b>	918	828	7	34	714
<b>TOTAL</b>	<b>16,222</b>	<b>10,924</b>	<b>167</b>	<b>2,148</b>	<b>31,691</b>

**Home Delivered Meals** provides delivery of nutritious meals to those who have limited mobility which impairs their ability to shop and cook for themselves.

**Information & Referral** is provided to individuals in need of assistance. If SCHRA provides the service, staff will be able to provide the information and assist them in getting the services. Staff is familiar with other resources in the community and will try to make referrals in order to meet the needs of our customers.

**Companionship** services are designed to alleviate the isolation of elderly and disabled individuals who have no one to check on them. Staff makes regular calls to clients to check on their wellbeing as well as make monthly home visits. Transportation to doctor appointments and grocery stores may also be provided if necessary.

**Crisis Intervention** can provide financial assistance to households with either an elderly or a disabled member who are facing eviction. This assistance is paid to the landlord/mortgage company. Case management and income management services are also provided to help alleviate the need for further assistance.

**Health Component** provides financial assistance to eligible individuals seeking help with health related expenses that are not covered by insurance (medication, dental and eye expenses). Assistance in completing forms to receive help with Medicare premiums (SHIP) is part of the Health Component. Transportation to doctor appointments may also be provided if public transportation is not available.

**Self-Sufficiency Component** provides case management to clients to achieve self-sufficiency through comprehensive education, goal-oriented action and guidance, etc. Crisis intervention and necessary expenditures may be provided to assist while they achieve program goals.

**Employment Component** can provide assistance for individuals seeking employment. Staff can assist clients in the preparation of a resume. Each office maintains a listing of any known jobs in the community. A summer youth program was offered for 5 weeks. This program offered work experience and training for graduating seniors.

**Income Management** provides assistance to households that need help budgeting their money. Under this component we also provide assistance with income tax preparation. There is a computer/printer in each office that will be accessible to individuals that want to prepare their own income taxes.

**PARTICIPANT ELIGIBILITY:** Direct services to clients, except information and referral, have an income eligibility requirement of 125% of the federal poverty guidelines. In addition to financial eligibility, need for service must be established according to the individual or household circumstances with priority given to the elderly and handicapped.



Scarlet Patterson, Human Resource Manager, received her NCRT (National Certified ROMA Trainer) certification in April 2015. CSBG Organizational Standards 4.3 states, “Organization’s Community Action Plan and strategic plan document the continuous use of the full Results Oriented Management and Accountability (ROMA) cycle (assessment, planning, implementation, achievement of results and evaluation), and document having used the services of a ROMA certified trainer” in the process. Additionally, all staff and board members are to be trained on ROMA requirements. Executive Director Coy Anderson pinned Mrs. Patterson and said he was very proud of her accomplishments.

ROMA was created in 1994 by an ongoing task force of Federal, State, and local community action officials – the Monitoring and Assessment Task Force (MATF). Based upon principles contained in the Government Performance and Results Act of 1993, ROMA provides a framework for continuous growth and improvement among more than 1000 local community action agencies and a basis for State leadership and assistance toward those ends.

# SSBG/PROTECTIVE SERVICE HOMEMAKER

**Cindy Miles, Program Director**

**PROGRAM COORDINATOR:** Ruby Twyman

**PROGRAM STAFF:** 9 (stationed in Bedford, Coffee, Hickman, Lincoln, Lawrence Marshall and Maury counties, but covers all 13 counties.)

**FUNDING SOURCE:** Department of Human Services

**CLIENTS:** 108



**PROGRAM OBJECTIVE:** To provide supportive services to adults (APS cases) who have been threatened with abuse, neglect, or exploitation, are unable to meet ADL's and require services in order to remain in home to prevent this from occurring.

**SERVICES PROVIDED:** Homemakers focus on activities which the client can no longer do for themselves and which are necessary for the client to remain at home including emotional support and encouragement during periods of loneliness and depression. Services are directed at teaching homemaking and daily living skills to these individuals.

Services provided include the following:

## ADULT PROTECTIVE SERVICE CASES

COUNTY	CASES	CLIENTS	HRS. OF SERV. UNITS	COUNTY	CASES	CLIENTS	HRS. OF SERV. UNITS
<b>Bedford</b>	12	12	1287.25	<b>Lincoln</b>	08	09	682
<b>Coffee</b>	07	07	630.75	<b>Marshall</b>	08	08	1155.50
<b>Franklin</b>	12	12	575.75	<b>Maury</b>	18	18	922
<b>Giles</b>	08	08	336	<b>Moore</b>	01	01	116.50
<b>Hickman</b>	10	12	809	<b>Perry</b>	01	02	383.75
<b>Lawrence</b>	10	12	953.50	<b>Wayne</b>	04	04	110.50
<b>Lewis</b>	03	03	68.25	<b>TOTAL</b>	<b>102</b>	<b>108</b>	<b>8030.75</b>

**PARTICIPANT ELIGIBILITY:** Eligibility is determined by the DHS caseworker. Need is established when an individual or family is experiencing a specific personal or social problem for which homemaker services is deemed to be the appropriate service.

## **WEATHERIZATION ASSISTANCE PROGRAM**

**Cindy Miles, Program Director**

**PROGRAM COORDINATOR:** Debbie Hopkins

**STAFF:** 2

**FUNDING SOURCE:** Tennessee Housing Development Agency

**CLIENTS SERVED:** 0



**Weatherization Works**

**PROGRAM OBJECTIVE:** To improve energy efficiency and reduce energy costs of low income households by applying required materials to each unit.

The Weatherization FY'15 contract did not start until November 1, 2014 and was extended until June 30, 2016 to run concurrently with FY'16 contract. This was due to the new THDA requirement that the audits must be done by a nationally certified inspector and this took several months to accomplish throughout the State.

During the year, all 183 weatherization applications were updated for eligibility. We are contracted to weatherize 67 homes before June 30, 2016 under the combined contracts.

**PROGRAM ELIGIBILITY:** Meet 200% of Federal Poverty Guidelines. Own or rent a dwelling which needs improvement to lower energy costs.

### **DO A LITTLE, SAVE A LOT.**

Everything you do, no matter how small, can add up to **BIG** savings and keep you warmer in the winter and cooler in the summer such as caulking around windows to weather-stripping around doors.



## **REBUILD AND RECOVER**

**Cindy Miles, Program Director**

**PROGRAM COORDINATOR:** Debbie Hopkins

**FUNDING SOURCE:** TN Housing Development Agency

**TOTAL CLIENTS:** 5

**PROGRAM OBJECTIVE:** South Central Human Resource Agency administered a grant for Lincoln County through THDA to help victims of the April 2014 tornado rebuild their homes. The maximum grant per house was \$40,000.

**ELIGIBILITY:** The homes must be owner occupied and they must fall within program income guidelines.

Rehabilitation was completed on three (3) homes. The fourth was a mobile home which was completely demolished. Through this grant and a \$12,000 grant that we successfully obtained through the Federal Home Loan Bank, with the assistance of First Commerce Bank, we were able to get the family a brand new mobile home debt free.



Trailer demolished in Lincoln County tornado

## **COMMUNITY REPRESENTATIVE PAYEE PROGRAM**

**Cindy Miles, Program Director**

**PROGRAM COORDINATOR:** Teresa Swafford

**STAFF:** 3

**FUNDING SOURCE:** Fee from Clients

**TOTAL CLIENTS:** 273

**BENEFITS OVERSEEN:** \$2,218,201

**PROGRAM OBJECTIVE:** The Payee Program offers money management services to assist persons who are incapable of budgeting, paying routine bills, and keeping track of financial matters.

**ELIGIBILITY:** Persons must receive Social Security or some type of disability benefit. The recipient must be certified by a physician or judge to be incapable of money management.

### **Clients Served:**

Bedford	23	Moore	04	Wilson	03
Coffee	35	Perry	06	Arkansas	01
Franklin	16	Wayne	02	Georgia	02
Giles	16	Davidson	13	Kentucky	01
Hickman	07	Decatur	01	North Carolina	01
Lawrence	40	Wisconsin	01	Missouri	01
Lewis	07	Hamilton	04	Virginia	01
Lincoln	19	Montgomery	01	Texas	01
Marshall	18	Alabama	02		
Maury	45	Williamson	02	<b>TOTAL</b>	<b>273</b>



### **CRPP GOALS:**

- To ensure payments are used for the client's current needs or saved if not needed.
- To ensure client continues to meet eligibility requirements for disability benefit payments.
- To assist with development and implementation of a monthly budget to ensure availability of funds throughout the month.
- To provide collaborative effort with other agencies to ensure recipient is receiving appropriate and essential services.



# **ALCOHOL/DRUG SAFETY EDUCATIONAL PROGRAM-** **Prime for Life**

**Cindy Miles, Program Director**

**INSTRUCTOR:** Jim Beck

**STAFF:** 2

**FUNDING SOURCE:** Local Performance Based

**PARTICIPANTS:** 91

**PROGRAM OBJECTIVE:** The Tennessee State Law (T.C.A. section 55-10-403) requires all persons convicted of driving under the influence of alcohol and other intoxicating drugs to receive a minimum of 12 hours of education pertaining to substance abuse and their ability to drive. The course must cover the traffic aspect of alcohol and drug use; physiological and psychological aspects of alcohol and other drug use. The court ordered educational program must be completed prior to having their driving privileges reinstated.



CLASS ATTENDEES:	
Hickman	22
Lawrence	40
Marshall	29
<b>TOTAL</b>	<b>91</b>

**SERVICES PROVIDED:** SCHRA has established an Alcohol/Drug Safety Program in Hickman, Lawrence and Marshall Counties. The class is held in Centerville on the first Saturday of each month; in Lawrenceburg on the second Saturday of the month; in Lewisburg on the third Saturday of the month.

# **EMERGENCY FOOD ASSISTANCE PROGRAM**

## **Commodities**

**James Coy Anderson, Program Director**

**PROGRAM COORDINATOR:** Dee Dee Sneed

**STAFF:** 3

**FUNDING SOURCE:** Tennessee Department of Agriculture

**CLIENTS:** 3,823 (July 2013 – June 2014)

**PROGRAM OBJECTIVE:** The South Central Human Resource Agency contracts with the Tennessee Department of Agriculture to distribute donated food items to households living in the 13 county service area.

**PROGRAM ELIGIBILITY:** Eligible households are defined as those households meeting one of the following requirements: 1) fall at or below 150% of the federal poverty guidelines; 2) proof of assistance programs such as food stamps, AFDC, SSI, Families First, public housing, and Low Income Heating Energy Assistance Program.

The Commodity Program fiscal year is October 1 – September 30.

This program utilizes 167 volunteers with a total 2,148 volunteer hours at the distribution sites.

### **SERVICES PROVIDED July 2014 – June 2015:**

<b>COUNTY</b>	<b>CLIENTS</b>	<b>TOTAL UNITS DISTRIBUTED BY SCHRA</b>
<b>Bedford</b>	385	55,712
<b>Coffee</b>	400	55,520
<b>Franklin</b>	330	51,348
<b>Giles</b>	256	32,445
<b>Hickman</b>	357	53,350
<b>Lawrence</b>	325	48,279
<b>Lewis</b>	226	35,578
<b>Lincoln</b>	378	60,929
<b>Marshall</b>	263	35,748
<b>Maury</b>	230	30,688
<b>Moore</b>	90	13,195
<b>Perry</b>	158	29,273
<b>Wayne</b>	320	48,204
<b>TOTAL</b>	<b>3,718</b>	<b>550,269</b>

**TOTAL UNITS RECEIVED BY  
SCHRA  
JULY 2014– JUNE 2015:  
379,830**

# **COMMUNITY CORRECTIONS PROGRAM**

**Judy McLeod, Program Director**

**CASE OFFICERS:** Vicki Davenport, Heather Nichols, Shane Uselton, Anthony Perocchi,  
Stephanie Sims, Bill Stone, Jeff Miller

**COUNSELOR/CASE MANAGER:** Sharon Medley

**SURVEILLANCE OFFICER:** Kevin Brown

**FUNDING SOURCE:** TN Department of Corrections

**PARTICIPANTS:** Total served - 505

**PROGRAM OBJECTIVE:** Community Corrections is designed to help alleviate the overcrowding of prisons and jails by offering constructive sentencing options for non-violent offenders. The SCHRA Community Corrections Program serves the Circuit Courts of the 14<sup>th</sup> Judicial District – Coffee County, the 17<sup>th</sup> Judicial District – Bedford, Lincoln, Moore, and Marshall Counties, and the 22<sup>nd</sup> Judicial District – Giles, Lawrence, Maury and Wayne Counties. This program provides intensive monitoring of offenders, and includes necessary services to enhance a successful reintegration into society.

**SERVICES PROVIDED:** Funds are available for specialized psychological evaluations, substance abuse diagnosis and testing, drug/alcohol assessments and treatment. Clients can be referred to out-patient counseling for drug, alcohol or mental health issues. In-house services include, but are not limited to: Sex Offender Treatment Group, Pro-Social Life Skills, Mental Health Intensive Out-Patient Counseling, Anger Management, Parenting Classes, Recovery Support Groups, Basic Life Skills Training, Employment, Budgeting, and Educational Services.

The following amounts were generated by Community Corrections participants in FY 2014/2015:

Victim Restitution Paid:	\$ 15,040.00
Court Costs/Fines Paid:	\$106,553.80
Wages Earned:	\$728,728.86
Child Support Paid:	\$ 14,396.45
Community Service Hours Worked:	\$ 7,502
Value of CSW (at \$7.25 per hour):	\$ 54,389.50
Number of face-to-face client contacts:	10,793
Number of Home Visits:	1374



**PARTICIPANT ELIGIBILITY:** Participants are sentenced to the program by the residing judges in Circuit Court, based on eligibility guidelines as established under Tennessee Code Annotated 40-36-106 et seq.

## **FINGERPRINTING SERVICES**

**Cindy Miles, Program Director – Lewis County**

**Technicians:** Angela Leigh and Melissa Rawdon (Lewis County)

**PROGRAM OBJECTIVE:** Providing fingerprinting services for the public. We receive \$3.00 per set of fingerprints captured.

We contract with Safran Morpho Trust USA and now have two sites – one in Lincoln County to service the eastern counties and one in Lewis County to service the western counties.



All fingerprint staff were required to participate in training as well as be vetted for security purposes. The security is higher with this provider and the laptop system has to be anchored to an immovable object in our office. All clients are required to provide a photo ID or 2 forms of other identification with their current address.

Fingerprints provided in the following months for FY'15:

<b>2014</b>		<b>2015</b>	
July	19	January	23
August	49	February	26
September	37	March	23
October	23	April	18
November	19	May	25
December	11	June	22
		<b>Total</b>	295

Clients need to log on to website <http://www.L1enrollment.com> or call 1-855-226-2937 to register for an appointment prior to arrival at SCHRA to have fingerprints done.

Fingerprinting in **Lewis County** is done on Fridays from 12:00 PM – 4:00 PM. Call 931-796-4825, for more information.

# **HEAD START/EARLY HEAD START PROGRAM**

**Laure Hopper, Program Director**

**ASSISTANT DIRECTOR:** Jessica Chambers Miller

**FUNDING SOURCE:** U. S. Department of Health & Human Services;  
USDA funded by TN Department of Human Services

## **About Us:**

SCHRA HS/EHS is located in Southern Middle Tennessee and we serve children and families in thirteen counties. We are the sixth largest program of the twenty-one programs in the state. Our funded enrollment for Head Start is 945 and 44 for Early Head Start. We have maintained 100% of our enrollment every month except for the 60 days prior to the end of the school year. We have 21 centers and 3 Pre-K collaborations, totaling 64 classrooms. Our Head Start operates full day (8:00a.m.-2:30p.m.) Monday thru Thursday, August- May. Our Early Head Start operates full day (8:00a.m.-2:00p.m.) Monday thru Friday, August- May with home base services provided June-July. Our centers are Tennessee State Childcare licensed, which implement the three-star rating system that uses the ECERS-R and ITERS-R to monitor learning environments and teaching practices.



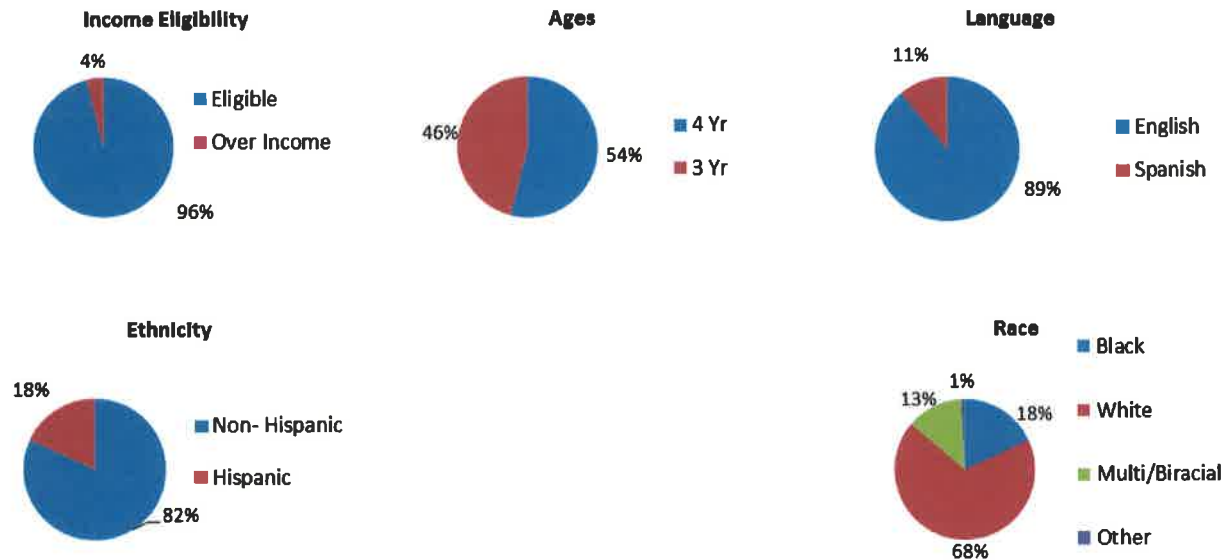
We strive to meet the high demand for early care in our areas. Early Head Start is of great need in our areas and our EHS waiting lists ranged from 33 to 86 at each center, totaling 157 children and families in need for services.

Collaborations with local school systems have resulted in blended funding and classrooms that enroll both Pre-K children and Head Start children. Three collaboration agreements are in place with Franklin, Maury and Wayne Counties. The Head Start staff work closely with our public school partners to ensure that Head Start child development services are maintained and monitored in the participating classrooms. These collaborations continue to bring about new challenges and opportunities to provide enhanced services to children and families in need.

## **Audit Information:**

The 2014 Audit resulted in no deficiencies and compliance with the requirements for the Head Start /Early Head Start Program.

## Our Demographics:



## School Readiness:

We know that school readiness should take on a holistic approach and that is why we focus on not only academic skills, but medical needs, family's needs, and the family's preparedness. Along with establishing school readiness goals for the children we acknowledge that parents are their child's first educators and will continue to be throughout their child's educational career. We have developed involvement activities that support parents engagement in their child's learning. Some examples of these are; parent's input in their child's School Readiness Goals, Make and Take Activities focused on School Readiness, Activity nights covering literacy, health eating habits, etc., Grilling and Building with Guys for male involvement, Kindergarten Transitions activities and Monthly Parent Meetings. Another way that we prepare children for kindergarten is by utilizing the CLASS tool. Class is an observation tool that focuses on the quality of teacher-child interactions. These interactions are meant to enhance the child's learning through effective questioning and feedback that will promote children's thought process as well as support their autonomy.

The following facts and charts summarize the children's progress over the program year.

**Health:**

- ✓ 99% of children and pregnant women had insurance
- ✓ 99% had ongoing source of health care
- ✓ 99% children and pregnant women received medical exams at the end of the program year
- ✓ 94% had accessible dental care
- ✓ 82% received preventative dental care by the end of the program year
- ✓ 97% up to date on all immunizations
- ✓ 1% received all immunizations possible, not up to date for age or exemption for immunizations
- ✓ 52% of overweight children decreased their weight

**Disabilities:**

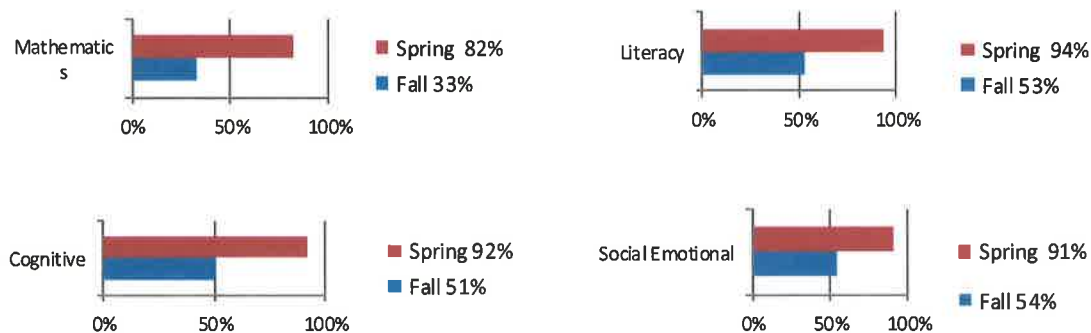
- ✓ 11% of children had IEP/IFSP
- ✓ 50% were identified and diagnosed during program year
- ✓ 50% were diagnosed prior to enrollment

**Mental Health:**

- ✓ Consultant met with staff regarding 17 children's behavior/mental health
- ✓ Consultant met with 11 families regarding their children's behavior/mental health
- ✓ 10 families were referred to outside services

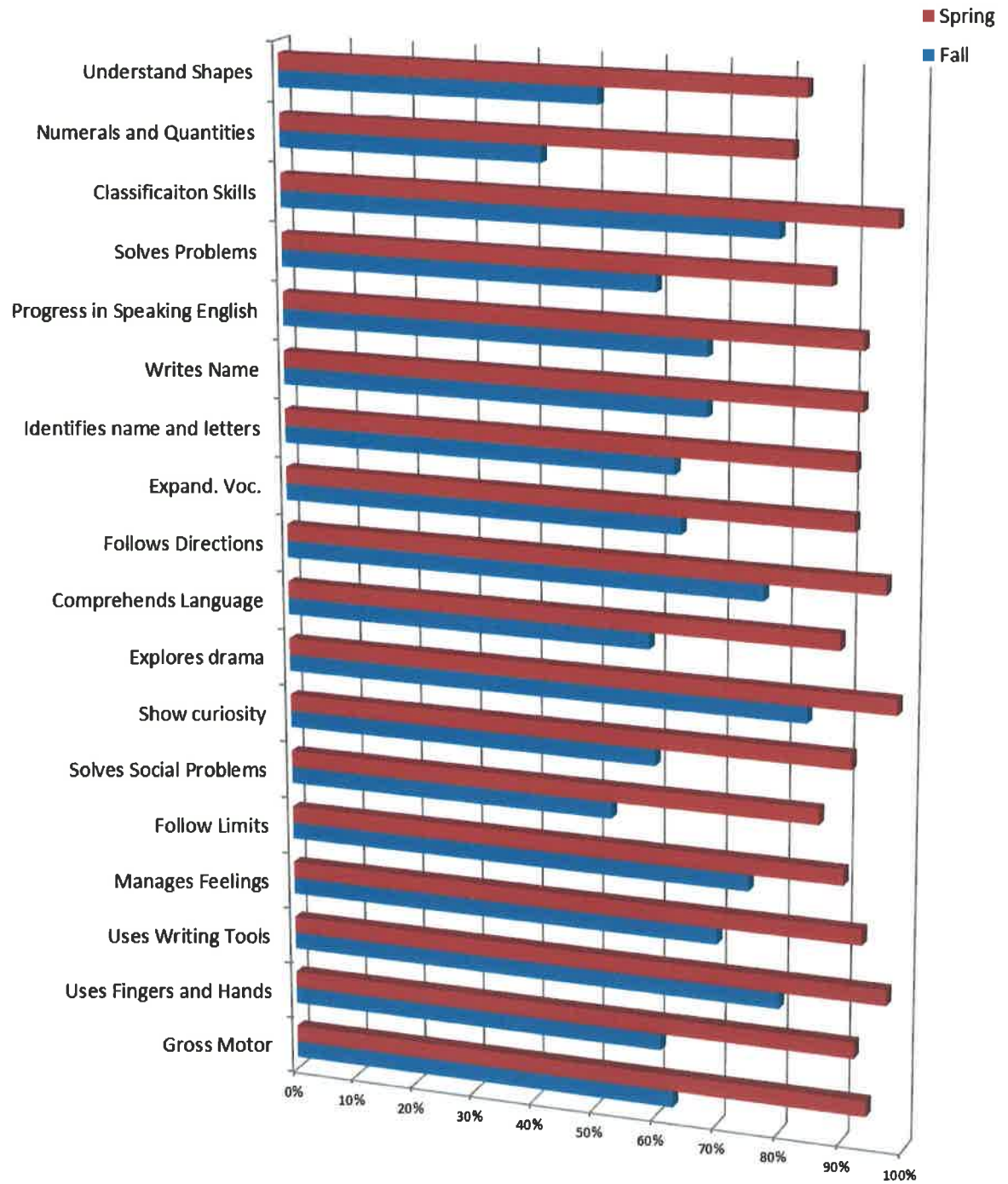
**2014-2015 Child Outcomes:**

**Areas of Largest Gains:**



## School Readiness Outcomes:

(Children Meeting Expectations by Age)





## 2014-2015 Head Start/Early Head Start Budget Reference

- Personnel- HS/EHS Personnel
- Fringe Benefits- FICA, Unemployment, Workman's Compensation, Retirement, Health/Dental Insurance
- Travel- Mileage, Lodging, Registration, Etc.
- Equipment- Vehicle Purchase
- Supplies- Office supplies, medical/dental supplies, classroom supplies, food service supplies, etc.
- Contractual- Reimbursement for Teacher Assistant's salaries with Pre-K contracts,
- Construction- fire alarm system, etc.
- Other- Rent, utilities, insurance, building maintenance, parent services, printing, staff development, field trips, etc.
- Admin- In-direct Costs

### Public/Private Funds Received July 2014 – June 2015

<u>Source</u>	<u>Amount</u>
Creson Scrap Metal	80.00
Wal-Mart	2,500.00
Telecom Pioneers	250.00
Individual Donation	1,497.00
Community Donation	300.00
Kiwanis Club	120.00
CFC Recycling	458.10
Unitarian Universalist Church	300.00
<b>Total</b>	<b>5505.10</b>

### 2014-2015 Proposed Budgets

#### Head Start

Personnel	\$3,147,009
Fringe Benefits	\$1,666,547
Travel	\$90,500
Equipment	\$35,000
Supplies	\$247,434
Construction	\$0
Contractual	\$430,000
Other Costs	\$884,094
Admin Costs	\$537,167
<b>Total</b>	<b>\$7,037,751</b>

#### Early Head Start

Personnel	\$318,358
Fringe Benefits	\$167,264
Travel	\$3,000
Equipment	\$0
Supplies	\$8,157
Construction	\$0
Contractual	\$0
Other Costs	\$32,370
Admin Costs	\$45,212
<b>Total</b>	<b>\$574,361</b>

## 2014-2015 Expenditures

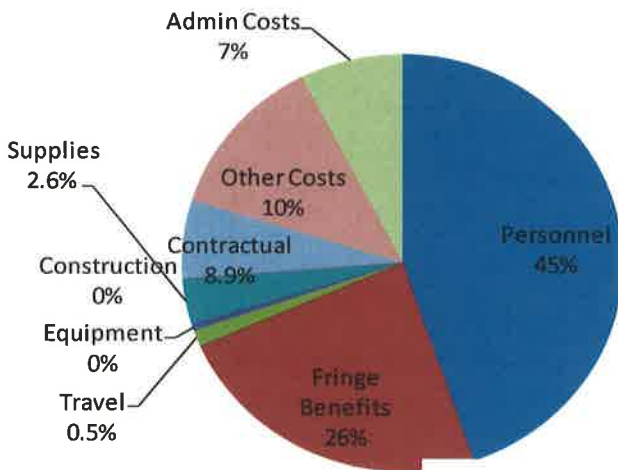
### Head Start

Personnel	\$3,044,363
Fringe	\$1,532,387
Benefits	
Travel	\$89,493
Equipment	\$33,062
Supplies	\$441,390
Construction	\$0
Contractual	\$425,238
Other Costs	\$966,336
Admin	\$503,678
Costs	
<b>Total</b>	<b>\$7,035,946</b>

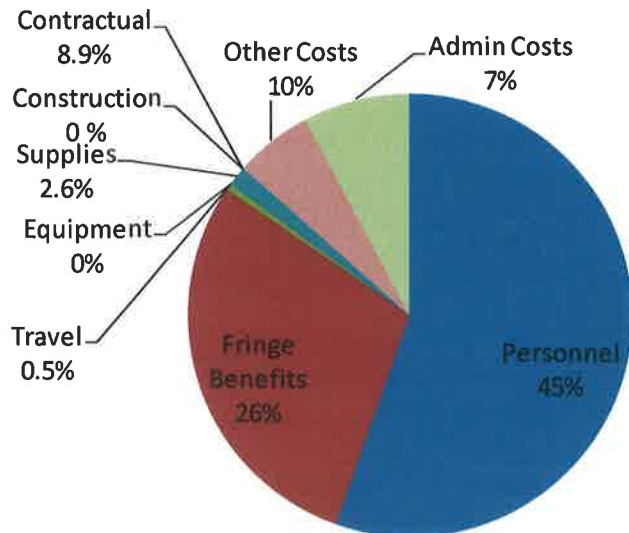
### Early Head Start

Personnel	\$321,297
Fringe	\$168,973
Benefits	
Travel	\$2,787
Equipment	\$0
Supplies	\$7,141
Construction	\$0
Contractual	\$0
Other Costs	\$30,091
Admin	\$44,020
Costs	
<b>Total</b>	<b>\$574,309</b>

HS Proposed 2015-16 Budget



EHS Proposed 2015-16 Budget



*IN LOVING MEMORY*



*Rita Jane Humphrey*  
*February 24, 1958 - September 30, 2015*

*Ms. Humphrey began working for the Homemaker Program  
on October 8, 2012.*

*The dedication, loyalty and friendship of Ms. Humphrey  
will be missed deeply by SCHRA.*

**Title V Older Worker Program**

**Foster Grandparent Program**

**Community Services Block Grant**

**Weatherization Assistance Program**

**Head Start/Early Head Start Programs**

**Low Income Home Energy Assistance Program**

**Nutrition Services for the Elderly, Private Pay Meals, Options, Catering**

**Homemaker Services, Private Pay Homemaker, Options**

**SSBG Protective Service Homemaker Program**

**Community Representative Payee Program**

**Alcohol/Drug Safety Education Program**

**Community Corrections Program**

**Volunteer Income Tax Assistance**

**Commodities**

**1437 Winchester Hwy.  
P. O. Box 638  
Fayetteville, TN 37334  
931-433-7182  
1-800-221-2642  
www.schra.us**

